

MISSOURI GAMING COMMISSION

COMMISSION RESOLUTION NO. 23-052  
APPROVING THE PETITION TO TRANSITION TO NON-FLOATING FACILITY

August 30, 2023

WHEREAS, on August 8, 2023, Argosy Riverside Casino d/b/a The Missouri Gaming Company, LLC ("Argosy") filed the attached Petition for Approval to Transition to Non-Floating Facility ("Petition");

WHEREAS, Section 313.800(20) RSMo, defines a nonfloating facility as follows:

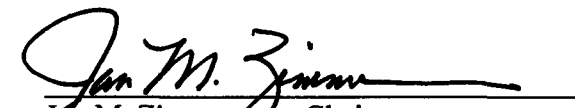
**"Nonfloating facility"**, any structure within one thousand feet from the closest edge of the main channel of the Missouri or Mississippi River, as established by the United States Army Corps of Engineers, that contains at least two thousand gallons of water beneath or inside the facility either by an enclosed space containing such water or in rigid or semirigid storage containers, tanks, or structures;

WHEREAS, based on the Petition and the evidence presented by Argosy, the Commission hereby finds as follows:

- 1) The proposed nonfloating facility is within 1,000 feet of the Missouri River;
- 2) The structure will contain at least 2,000 gallons of water by an enclosed space beneath the facility; and
- 3) If the structure is modified according to the Petition, the structure would meet the definition of a nonfloating facility under Section 313.800(20), RSMo.

NOW, THEREFORE, BE IT RESOLVED, that the Petition for Transition to a Non-Floating Facility is approved.

SO ADOPTED.

  
Jan M. Zimmerman, Chair  
Missouri Gaming Commission

IN THE MISSOURI GAMING COMMISSION  
STATE OF MISSOURI

In Re: )  
 )  
Argosy Riverside Casino )  
d/b/a The Missouri Gaming Company, LLC )  
777 NW Argosy Parkway )  
Riverside, MO 64150 )

**PETITION FOR APPROVAL TO TRANSITION TO NON-FLOATING FACILITY**

Comes Now Petitioner, The Missouri Gaming Company, LLC ("Argosy Riverside") requesting approval from the Missouri Gaming Commission ("Commission") of the plans outlined herein to convert from its current structure as a floating facility to a non-floating facility. In support of the petition, Petitioner states as follows:

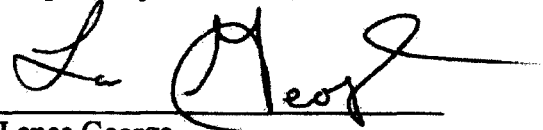
**FACTS**

1. The Missouri Gaming Company operates a facility in Riverside, Missouri known as Argosy Riverside ("Casino").
2. The Missouri Gaming Company's Class B license is currently active and valid with an expiration date of February 28, 2026.
3. The Casino is a floating facility located in Riverside.
4. The Casino is built upon a concrete basin filled with approximately eight feet of water within which the Casino's gaming floor sits atop. Pillars are located throughout the basin with a five inch gap between them and the floor.
5. The Casino has been operating in the same location and in the current configuration since 2003.
6. In 2021, the Missouri General Assembly passed Senate Bill 26 which amended Sections 313.800, 313.805, and 313.812 of the Revised Statutes of Missouri.

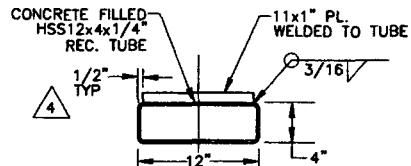
7. The amendments to the definitions within Section 313.800 changed certain definitions related to the gaming industry as follows:
  - (9) "Excursion Gambling Boat", a boat, ferry, other floating facility, or any nonfloating facility licensed by the commission on or inside of which gambling games are allowed;
  - (19) "Mississippi River" and "Missouri River", the water, bed and banks of those rivers, including any space filled wholly or partially by the waters of those rivers in a manner approved by the commission but shall not include any artificial space created after May 20, 1994, and is located more than one thousand feet from the closest edge of the main channel of the river as established by the United States Army Corp of Engineers"
  - (20) "Nonfloating Facility", any structure within one thousand feet from the closest edge of the main channel of the Missouri or Mississippi River, as established by the United States Army Corp of Engineers, that contains at least two thousand gallons of water beneath or inside the facility either by an enclosed space containing such water or in rigid or semirigid storage containers, tanks, or structures;
8. The Missouri Gaming Company has completed design work to transition the Casino from a floating to a nonfloating facility. This will be accomplished by installing steel tubing filled with concrete on the top of the pillars.
9. The water that is currently in the basin will remain in this enclosed 56,000 square foot space and water levels will be periodically checked to ensure at least 2,000 gallons are retained, utilizing the recognized calculation of 7.48052 gallons per one cubic foot.
10. Under the provisions of Section 313.812(17), RSMo, this Commission "shall render a finding concerning the transition from boat, barge, or floating facility to a nonfloating facility within thirty days after hearing on any request from an applicant or licensee."
11. Section 313.812(17), RSMo, further provides that such a hearing may be held before any final action on licensing.
12. Based on the language contained in Section 313.800(9), (19), and (20), the drawings of the proposed conversion to a nonfloating facility will comply with the provision of Missouri law related to gaming.

**WHEREFORE, for the foregoing reasons, Petitioner respectfully requests that this Commission give approval for the conversion from a floating to a nonfloating facility for the Casino.**

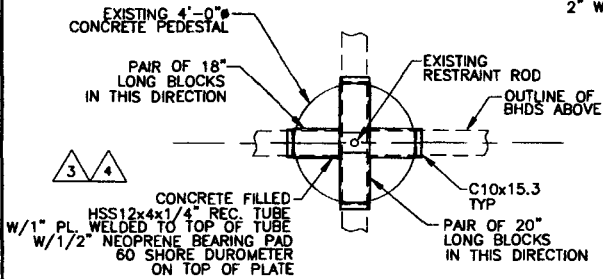
Respectfully Submitted,

A handwritten signature in black ink, appearing to read "Lance George", written over a horizontal line.

**Lance George  
Vice President and General Manager**



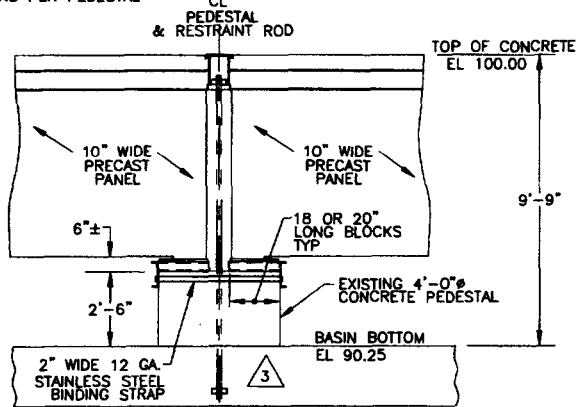
**DETAIL 1**  
END VIEW OF BLOCK  
SCALE: 1" = 1'-0"



**PLAN @ TOP OF PEDESTAL**

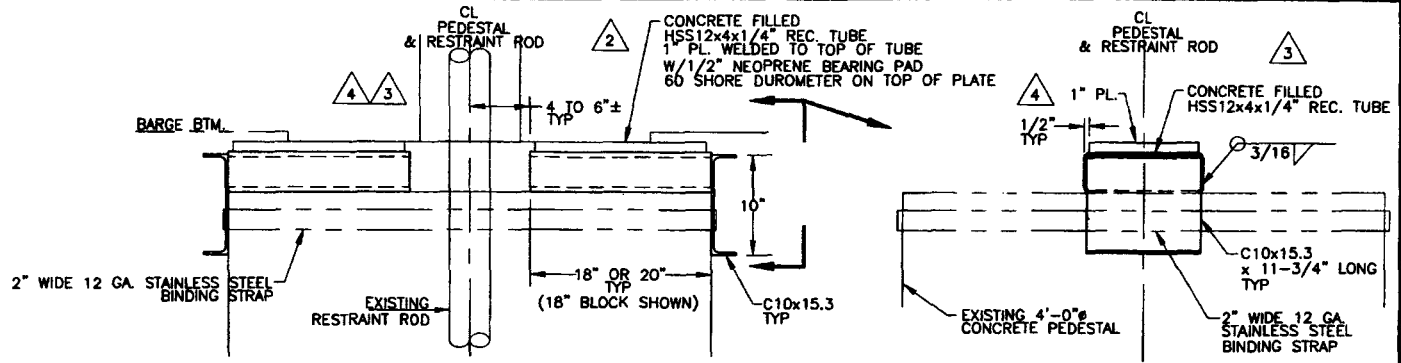
SCALE: 1/4" = 1'-0"

TYP 4 LOCATIONS PER PEDESTAL



**SECTION @ BARGE/BASIN BOTTOM**

TYP 97 LOCATIONS  
SCALE: 1/4" = 1'-0"

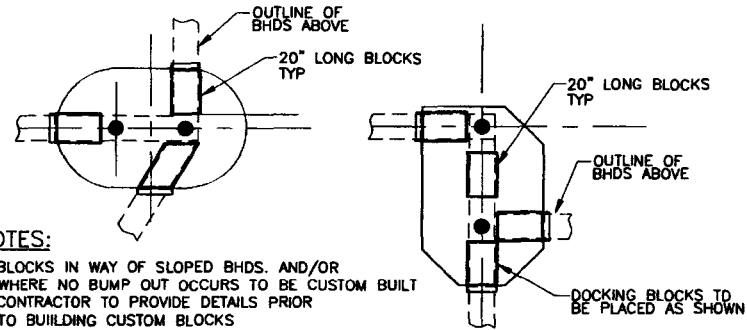


**ENLARGED SECTION**

SCALE: 1" = 1'-0"

**NOTE:**

1. STEEL SHIMS TO BE USED AS NEEDED BETWEEN 1" STEEL PLATE AND BOTTOM OF CONCRETE PANELS.
2. SHIM TO HAVE RUBBER ON TOP



**NOTES:**

1. BLOCKS IN WAY OF SLOPED BHDS. AND/OR WHERE NO BUMP OUT OCCURS TO BE CUSTOM BUILT
2. CONTRACTOR TO PROVIDE DETAILS PRIOR TO BUILDING CUSTOM BLOCKS

**MISCELLANEOUS CONCRETE BASES**

1 OF EACH EXISTING  
SEE LPA DWG 4414J-A10 FOR LOCATIONS  
SCALE: 1/4" = 1'-0"

**BLOCK TOTALS\***

280 BLOCKS @ 20" LONG EACH  
210 BLOCKS @ 18" LONG EACH  
\*NUMBERS TO BE VERIFIED BY CONTRACTOR

134 @ 4'-0" CONCRETE PEDESTALS W/RODS  
2 MISCELLANEOUS SHAPE W/2 RODS IN EACH  
TOTAL = 136 PEDESTALS/138 RODS

**REVISIONS**

| NO. | DESCRIPTION  | BY  | DATE    |
|-----|--|-----|---------|
| 1   | DELETED END CAP PLATE FOR BLOCKS                                   | SCA | 4-11-23 |
| 2   | REVISED SINGLE HSS10x5x1/2" TO PAIR OF HSS6x5x1/4" WELDED TOGETHER | SCA | 5-04-23 |
| 3   | REVISED AS PER DESIGN DEVELOPMENTS FOLLOWING VESSEL INSPECTION     | SCA | 7-7-23  |
| 4   | ADDED 1" PL. TO TOP OF TUBE  | SCA | 8-4-23  |



**LAY, PITMAN & ASSOCIATES**

NAVAL ARCHITECTS  
2300 MARSH POINT RD., SUITE 303, NEPTUNE BEACH, FLORIDA 32266

**ARGOSY RIVERSIDE CASINO**  
TYPICAL BARGE BLOCKING DETAILS