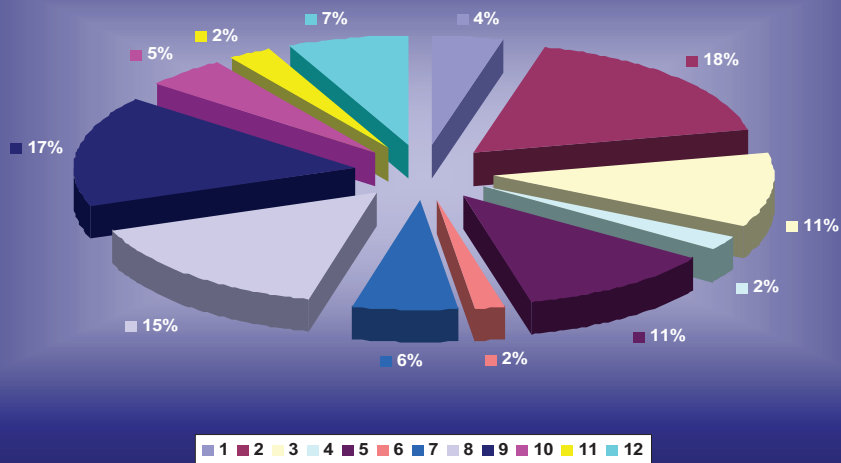
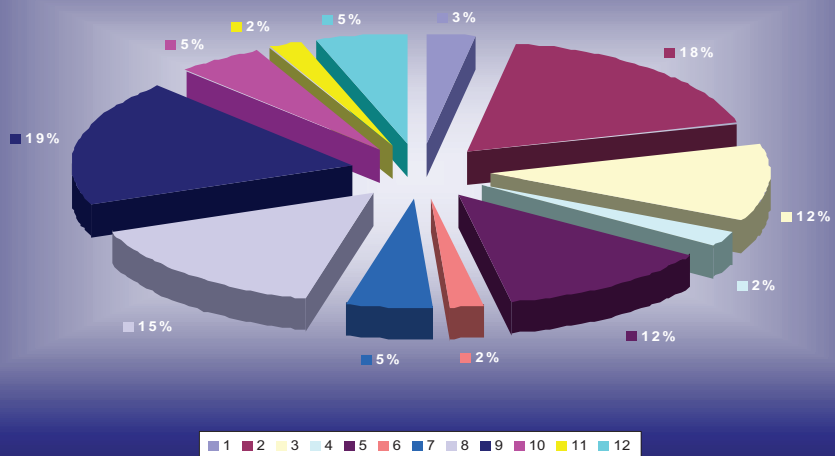


ADMISSION FEES PERCENTAGE OF STATE TOTAL



- | | | |
|---------------------------------------|-------------------------------------|--|
| 1 - President/Pinnacle/St. Louis - 4% | 5 - Harrah's North Kansas City -11% | 9 - Harrah's Maryland Heights - 17% |
| 2 - Ameristar/St. Charles - 18% | 6 - Lady Luck/Caruthersville - 2% | 10 - Isle of Capri/Boonville - 5% |
| 3 - Argosy/Riverside -11% | 7 - Isle of Capri/Kansas City - 6% | 11 - Terrible's Mark Twain/LaGrange - 2% |
| 4 - Terrible's St. Jo - 2% | 8 - Ameristar/Kansas City -15% | 12 - Lumière Place/Pinnacle/St. Louis - 7% |

GAMING TAX PERCENTAGE OF STATE TOTAL



- | | | |
|---------------------------------------|-------------------------------------|--|
| 1 - President/Pinnacle/St. Louis - 3% | 5 - Harrah's North Kansas City -12% | 9 - Harrah's Maryland Heights - 19% |
| 2 - Ameristar/St. Charles - 18% | 6 - Lady Luck/Caruthersville -2% | 10 - Isle of Capri/Boonville - 5% |
| 3 - Argosy/Riverside -12% | 7 - Isle of Capri/Kansas City - 5% | 11 - Terrible's Mark Twain/LaGrange - 2% |
| 4 - Terrible's St. Jo - 2% | 8 - Ameristar/Kansas City -15% | 12 - Lumière Place/Pinnacle/St. Louis - 5% |