

MISSOURI GAMING COMMISSION

COMMISSION RESOLUTION NO. 23-027
APPROVING THE PETITION TO TRANSITION TO NON-FLOATING FACILITY

April 26, 2023

WHEREAS, on April 10, 2023, Tropicana St. Louis, LLC d/b/a Horseshoe St. Louis (“Tropicana”) filed the attached Petition to Transition to Non-Floating Facility (“Petition”);

WHEREAS, Section 313.800(20) RSMo, defines a nonfloating facility as follows:

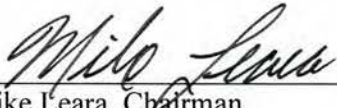
“**Nonfloating facility**”, any structure within one thousand feet from the closest edge of the main channel of the Missouri or Mississippi River, as established by the United States Army Corps of Engineers, that contains at least two thousand gallons of water beneath or inside the facility either by an enclosed space containing such water or in rigid or semirigid storage containers, tanks, or structures;

WHEREAS, based on the Petition and the evidence presented by Tropicana, the Commission hereby finds as follows:

- 1) The proposed nonfloating facility is within 1,000 feet of the Mississippi River;
- 2) The structure will contain at least 2,000 gallons of water in rigid containers inside the facility; and
- 3) If the structure is modified according to the Petition, the structure would meet the definition of a nonfloating facility under Section 313.800(20), RSMo.

NOW, THEREFORE, BE IT RESOLVED, that the Petition for Transition to a Non-Floating Facility is approved.

SO ADOPTED.



Mike Leara, Chairman
Missouri Gaming Commission

IN THE MISSOURI GAMING COMMISSION
STATE OF MISSOURI

In Re:)
)
Tropicana St. Louis, LLC)
d/b/a Horseshoe St. Louis)
999 N. 2nd St.)
St. Louis, MO 63102)
)
)

PETITION FOR APPROVAL TO TRANSITION TO NON-FLOATING FACILITY

Comes Now Petitioner, TROPICANA ST. LOUIS, LLC (“Tropicana”) requesting approval from the Missouri Gaming Commission (“Commission”) of the plans outlined herein to convert from its current structure as a floating facility to a non-floating facility. In support of the petition, Petitioner states as follows:

FACTS

1. Tropicana St. Louis operates a gaming facility in St. Louis, Missouri known as Horseshoe St. Louis (“Casino”).
2. Tropicana St. Louis’ Class B license is currently active and valid with an expiration date of June 30, 2024.
3. The Casino is a floating facility located in downtown St. Louis in the Laclede’s Landing area of the downtown region.
4. The Casino floats in a concrete basin filled with approximately eighteen (18) to twenty four (24) inches of water within which the Casino’s four barges sit. These barges are attached to the floor of the basin with a series of tensioning cables that limit the mobility of the casino floor.

5. The Casino has been operating in the same location and in the current configuration since it opened in 2007.
6. In 2021, the Missouri General Assembly passed Senate Bill 26 which amended Sections 313.800, 313.805, and 313.812 of the Revised Statutes of Missouri.
7. The amendments to the definitions within Section 313.800 changed certain definitions related to the gaming industry as follows:

(9) “**Excursion Gambling Boat**”, a boat, ferry, other floating facility, or any nonfloating facility licensed by the commission on or inside of which gambling games are allowed;

(19) “**Mississippi River**” and “**Missouri River**”, the water, bed and banks of those rivers, including any space filled wholly or partially by the waters of those rivers in a manner approved by the commission but shall not include any artificial space created after May 20, 1994, and is located more than one thousand feet from the closest edge of the main channel of the river as established by the United States Army Corp of Engineers”

(20) “**Nonfloating Facility**”, any structure within one thousand feet from the closest edge of the main channel of the Missouri or Mississippi River, as established by the United States Army Corp of Engineers, that contains at least two thousand gallons of water beneath or inside the facility either by an enclosed space containing such water or in rigid or semirigid storage containers, tanks, or structures;

8. Tropicana St. Louis has completed design work to transition the Casino from a floating to a nonfloating facility by draining the water from the concrete basin, landing the Casino barges on a reinforced concrete block structure, and adding rigid tanks to the hull of the barges.

9. The rigid ^{or semi-rigid} tanks will consist of ^{multiple containers} ~~four separate tanks each of which will hold five hundred~~ (500) ~~gallons of water~~ bringing the total water held in the hulls of the Casino barges under the gaming floor to ^{a minimum of} two thousand (2,000) gallons.

Amendment
by
Interlineation
4/26/23
PDR

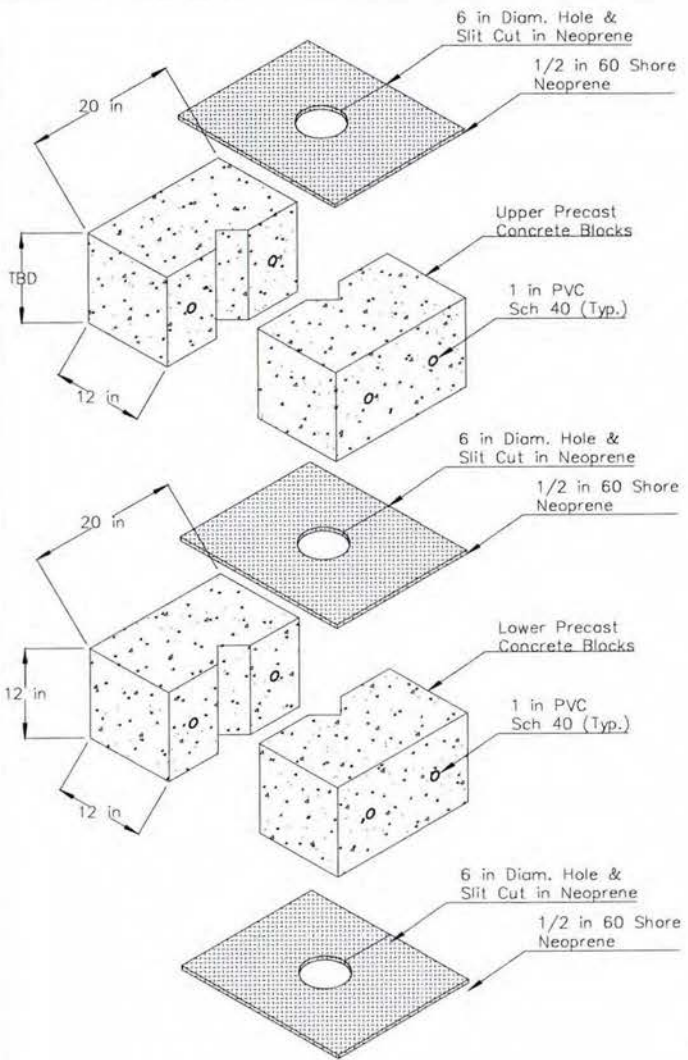
10. Under the provisions of Section 313.812(17), RSMo, this Commission “shall render a finding concerning the transition from boat, barge, or floating facility to a nonfloating facility within thirty days after a hearing on any request from an applicant or licensee.”
11. Section 313.812(17), RSMo, further provides that such a hearing may be held before any final action on licensing.
12. Based on the language contained in Section 313.800(9), (19) and (20), the drawings of the proposed conversion to a nonfloating facility will comply with the provision of Missouri law related to gaming.

WHEREFORE, for the foregoing reasons, Petitioner respectfully requests that this Commission give approval for the conversion from a floating to a nonfloating facility for the Casino.

Respectfully Submitted,



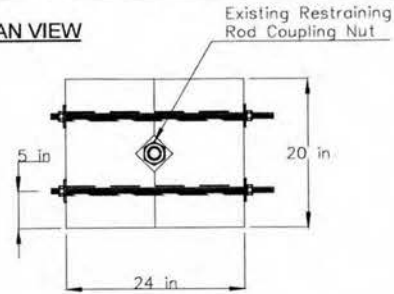
Brian Marsh
Senior Vice President and General Manager



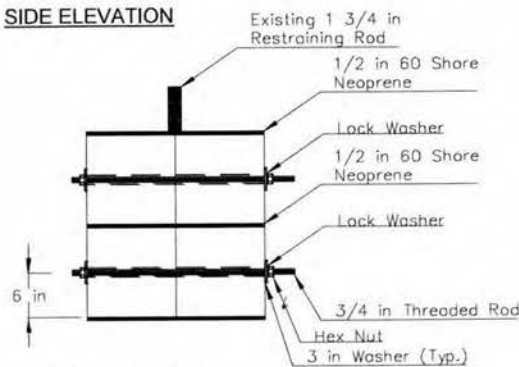
1 PRECAST PEDESTAL COMPONENTS

NOT TO SCALE

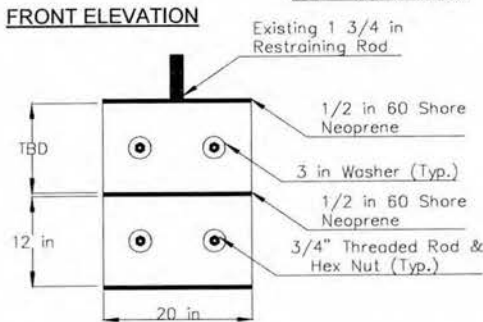
PLAN VIEW



SIDE ELEVATION



FRONT ELEVATION



NOTE: All threaded rod, nuts, and washers field installed by M&D Marine.

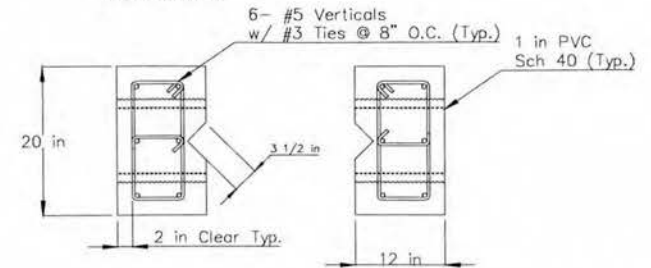
All hardware standard grade 2.

2 ASSEMBLED PEDESTALS

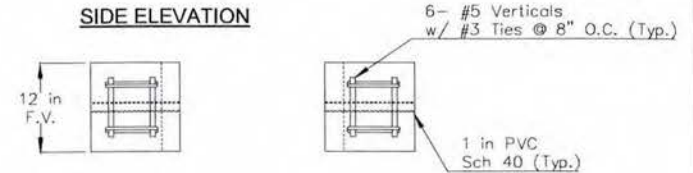
SCALE: 3/4" = 1'

REVISIONS			
REV	DESCRIPTION	DATE	BY
1	REDUCED PVC & HW SIZE	4/3/2023	JOE

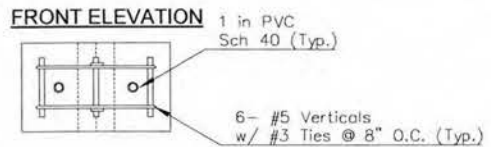
PLAN VIEW



SIDE ELEVATION



FRONT ELEVATION



3 INTERNAL COMPONENTS

SCALE: 3/4" = 1'

NOTE: Interior Precast concrete pedestals shall consist of 2 bottom and 2 top pieces; totaling 4 precast blocks. The bottom pieces shall be 12 in tall, the height of the top pieces shall be field verified and custom cast.

Structural Concrete 28 Day Rating
-Hard Rock Type 4000 PSI

Portland cement shall conform to ASTM C150, Type I
See specifications for more details.

103 REQUIRED

M&D MARINE SERVICES	HORSESHOE ST. LOUIS			
	DRY DOCKING INTERIOR PEDESTAL DETAILS			
900 NORTH AVE. SENECA, WI	DATE 3/11/2023	DRAWN BY: JOE	CHECKED BY: MAC	SHEET: D1

REVISIONS			
REV	DESCRIPTION	DATE	BY

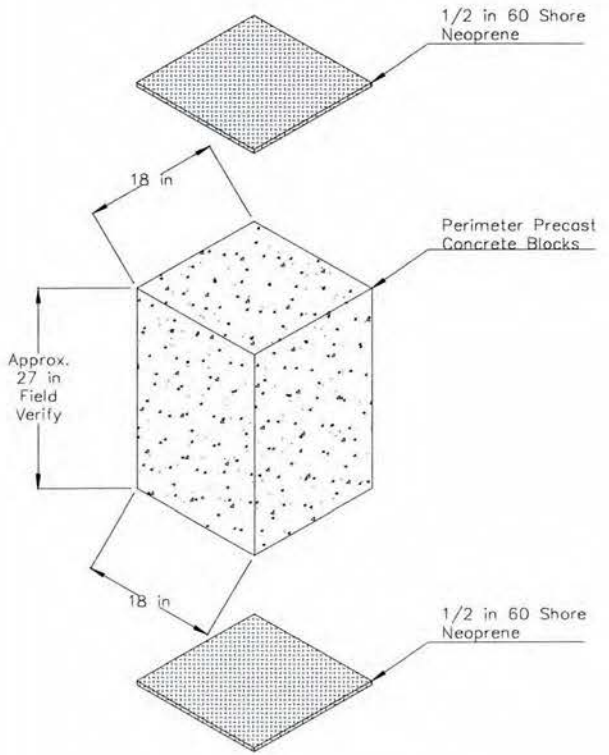
- Reviewed, no exception noted
- Reviewed, exception noted
- Rejected

Reviewed only for general compliance with the design concept and general compliance with the information given in the contract documents. Any action shown is subject to the requirements of the plans and specifications. Contractor's responsibility includes, but is not limited to, dimensions which shall be confirmed and corrected by the Contractor at the job site fabrication processes and techniques of construction coordination of his work with that of all other trades and satisfactory performance of his work.

M.A. Engineering, Inc.

Date 4/04/23 By JT

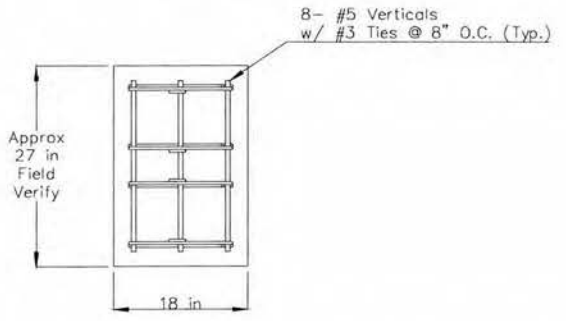
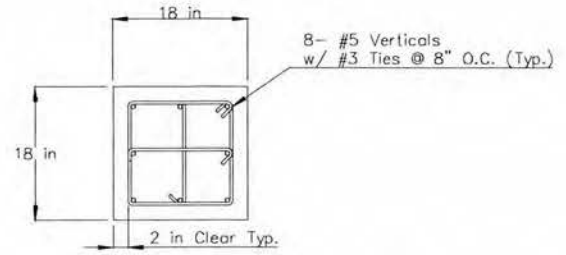
- Resubmittal required
- Resubmittal not required



1 PRECAST PEDESTAL COMPONENTS
NOT TO SCALE

Structural Concrete 28 Day Rating
-Hard Rock Type 4000 PSI

Portland cement shall conform to ASTM C150, Type I
See specifications for more details.



2 INTERNAL COMPONENTS
SCALE: 3/4" = 1'

40 REQUIRED

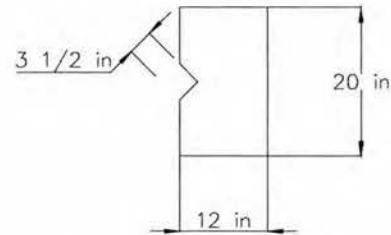
M&D MARINE SERVICES	HORSESHOE ST. LOUIS		
	DRY DOCKING PERIMETER PEDESTAL DETAILS		
900 NORTH AVE. SENECA, WI	DATE 3/13/2023	DRAWN BY: JOE	CHECKED BY: MAC SHEET: D2

INTERIOR SHIMS

SHAPE



WITH DIMENSIONS



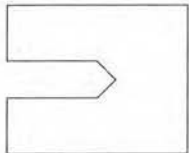
NOTE:

Shims to be made of regular mild steel.

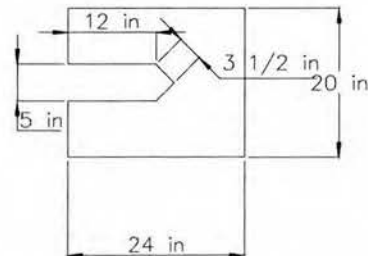
QUANTITIES

1/2 Plate - 112

SHAPE



WITH DIMENSIONS



NOTE:

Shims to be made of regular mild steel.

QUANTITIES

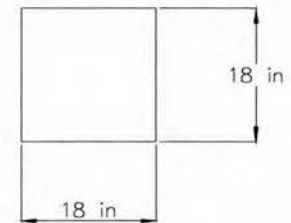
1/8 Plate - 32

1/4 Plate - 32

REVISIONS			
REV	DESCRIPTION	DATE	BY

PERIMETER SHIMS

SHAPE



NOTE:

Shims to be made of regular mild steel.

QUANTITIES

1/8 Plate - 16

1/4 Plate - 16

1/2 Plate - 16

**M&D
MARINE
SERVICES**

900 NORTH AVE.
SENECA, WI

HORSESHOE ST. LOUIS

**DRY DOCKING
PEDESTAL SHIM DETAILS**

DATE 4/03/2023

DRAWN BY:
JOE

CHECKED BY:
MAC

SHEET: D3